



Renal Standardization Study Group

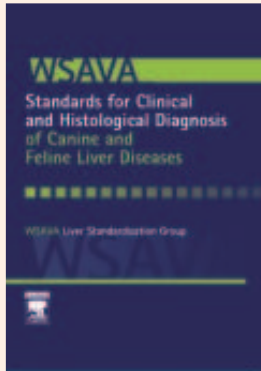


Renal Standardization Study Group



Standards for Histological and Clinical Diagnosis of Canine and Feline Liver Diseases – WSAVA’s textbook is on the shelves!

The textbook is designed to provide a world standard of guidelines for the diagnosis of liver diseases in dogs and cats using both histological and clinical criteria.



www.wsava.org

Chapters include:

- Sampling and handling of liver tissue
- Ultrasonographic identification and characterization of congenital portosystemic shunts and portal hypertensive disorders
- Morphological classification of biliary disorders
- Morphological classification of parenchymal disorders, including
- Normal histology, reversible hepatocyte injury, and hepatic amyloidosis
- Hepatocellular death, hepatitis, and cirrhosis
- Hepatic abscesses and granulomas, hepatic metabolic storage diseases, and miscellaneous conditions
- Morphological classification of neoplastic disorders

The work on this book was sponsored generously by Hill’s Pet Nutrition

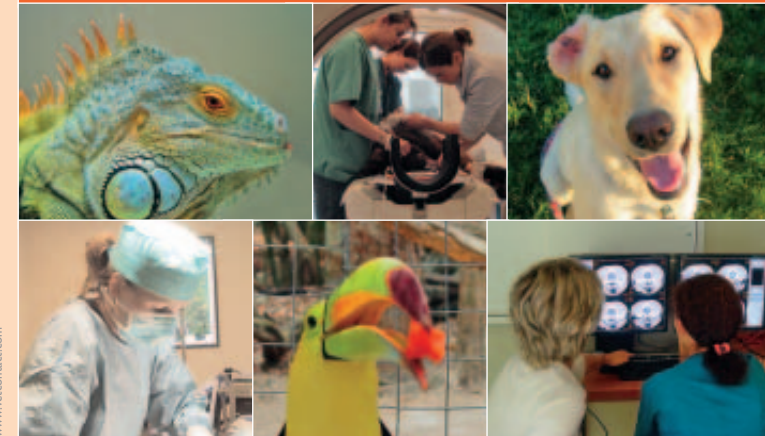
MEMBERSHIP

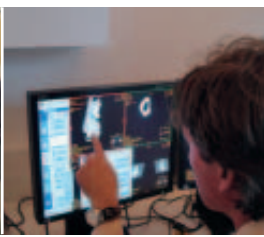
The group is composed of internationally recognized scientists in companion animal nephrology and pathology:

- Dr. Claudio Brovida, ANUBI Companion Animals Hospital (Italy), Internal Medicine and Nephrology
- Dr. Cathy Brown, University of Georgia (USA), Pathology
- Dr. Larry Cowgill, University of California (USA), Nephrology, Co-chair
- Dr. Jonathan Elliott, Royal Veterinary College (UK), Nephrology
- Dr. Roel Goldschmeding, University Medical Centre Utrecht (NL), Renal Pathology
- Dr. Reidun Heiene, Norwegian College of Veterinary Medicine (NO), Internal Medicine and Nephrology
- Dr. George Lees, Texas A&M University (USA), Internal Medicine and Nephrology
- Dr. Johan Jansen, Norwegian College of Veterinary Medicine (NO), Pathology
- Dr. David Polzin, University of Minnesota (USA), Internal Medicine and Nephrology, Co-chair
- Dr. Kinji Shirota, Research Institute of Biosciences Azabu University (JAPAN), Pathology
- Dr. W.L. Spangler, Consulting Pathologist (USA), Pathology
- Dr. Shelly Vaden, North Carolina State University (USA), Internal Medicine and Nephrology
- Dr. Astrid van Dongen, Utrecht University (NL), Internal Medicine and Nephrology



World Small Animal Veterinary Association





BACKGROUND

In human beings, specific proteinuric kidney diseases are characterized and identified by their light microscopic, immunopathologic, and electron microscopic features which are correlated with the patient's particular clinical and clinicopathologic findings. Diagnosis of a patient's glomerular disease provides insights into the disorder's pathogenesis and prognosis, as well as guidelines for appropriate treatment.

While veterinary pathologists have attempted to characterize glomerular diseases in dogs in a similar manner, they have based their diagnoses primarily on light microscopic findings.

These efforts largely have failed to yield a consensus nomenclature, morphologic characterization, and adequate and accurate results. This failure underscores the importance of a uniform classification scheme based on expanded immunologic and ultrastructural evaluation in renal disease diagnosis.

The purpose of this initiative is to employ the use of all three diagnostic modalities, as used in human nephropathology, to accurately characterize glomerular disease in proteinuric dogs, and to relate these findings to clinicopathologic presentation and outcome.

SPECIFIC AIMS

The purpose of this initiative is to employ the use of all three diagnostic modalities, as used in human nephropathology, to accurately characterize glomerular disease in proteinuric dogs, and to relate these findings to clinicopathologic presentation and outcome. This proposal achieves this objective by establishing an international network of cooperating diagnostic renal pathology service centers to systematically evaluate tissue specimens obtained from proteinuric dogs world-wide and collect information about the clinical and clinicopathologic features of their illnesses. The long-term goal of this study is to better understand and evaluate and thus optimize the medical management of dogs with proteinuric renal disorders by identifying distinct glomerular diseases for which specific prognoses and therapeutic guidelines can be provided.

FURTHER INFORMATION

For further information and updates on [Renal Standardization Study Group](#) please visit the WSAVA website: www.wsava.org



SPONSORSHIP

The group's efforts are supported by the WSAVA, an organization with over 65,000 members from 65 member associations, Hills Pet Nutrition, a global leader in pet nutrition, and Bayer Animal Health, a global leader in veterinary pharmaceuticals.

